

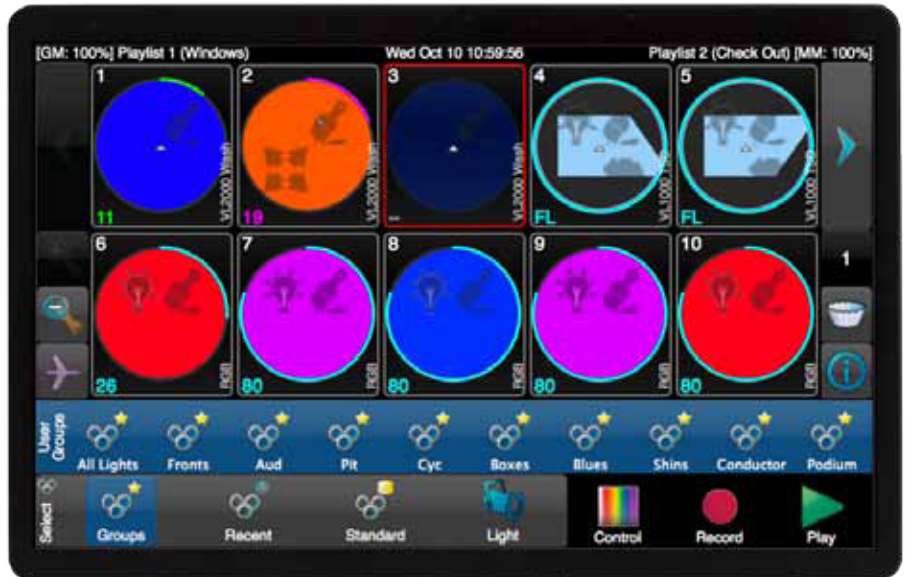
Solved.



- Ideal for small and medium size venues.
- Simple. Affordable. Powerful.
- LED programming simplified.
- Intuitive natural language control.
- Teachable. Coachable. Easy to remember.
- Silent, compact design.

SELECT the lights you want to work with.

- No command line to learn – manage images, not numbers.
- Cognito™ groups your lights automatically to reduce setup time – groups you create reduce programming time.
- Real-time visual feedback of your lights at a glance.



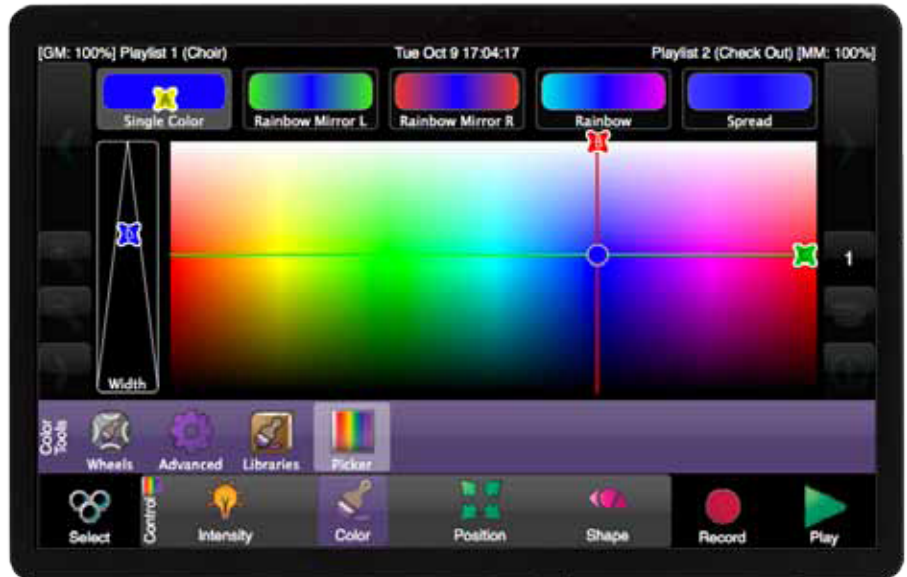
RECORD what you see for ease of programming and playback.



- No cue number constraints – drag and drop the cues where you want them on a playlist.
- Save your memories on a slider for on-the-fly recall – then organize the looks as cues into playlists for scripted shows.
- Capture Groups, Colors, Positions and Shapes as your own custom libraries.

CONTROL your lights quickly and easily with a large, well-ordered assortment of tools.

- Never look at a DMX chart again, natural language control makes it simple to control every fixture type in your system.
- Tools categorized by Intensity, Color, Position and Shape – recall them in an instant on the console hardware.
- Predefined libraries get you programming fast – libraries you define keep your favorites at your fingertips.



PLAY back your work and see it come together !



- Cognito doesn't ship with arbitrary constraints – unlimited cues and memories put you in charge of the show organization.
- Hands on and heads up: Playback is made easy with well-positioned controls.
- Configurable timing and transition options enables nuanced show playback.



Lighting Control **Solved**

Cognito™ won't intimidate the less-experienced user and won't disappoint the most demanding professional.

- DMX512 and Ethernet output, including Pathport, Art-Net and E1.31 sACN
- **neato**™ iOS App extensions for remote channel control and memory playback
- Separate intensity, color, position and shape attribute timing
- Selectable color spaces and color temperature correlation across lights
- Automatic Move-In-Black feature
- Power-over-Ethernet
- 7" capacitive touchscreen
- Rack-mountable
- Multi-platform off-line editor

Cognito™ is available in three models: [Starter](#), [Pro512](#) and [Pro1024](#). Each is priced to suit the artistic needs of:

- Schools
- Houses of worship
- Touring productions
- Museums
- Theme parks
- Cruise ships
- Night clubs
- Community theaters
- Film and television production studios
- Corporate theaters

Features	Starter	Pro512	Pro1024
Output addresses	512	512	1024
Pathport Protocol	Yes	Yes	Yes
ANSI E1.31 sACN	No	Yes	Yes
Art-Net	No	Yes	Yes
DMX512 OUT ports	1	2*	2
DMX512 IN ports	Not enabled	Yes	Yes
MIDI show control	Not enabled	Yes	Yes
RS232 port	Not enabled	Yes	Yes
Contact closures	Not enabled	3	3
Accessories			
Regulated power supply	Included	Included	Included
Dust cover	Optional	Included	Included
Rack-mount kit	Optional	Optional	Optional

* Universe 1 repeated on both OUT ports

Patents pending

